



Landkreis Nordwestmecklenburg

Stabsstelle Wirtschafts- und
Regionalentwicklung

Rostocker Straße 76,

23970 Wismar

+49 (0) 3841 3040 9811

+49 (0) 3841 3040 8 9811

y.rowoldt@nordwestmecklenburg.de

www.nordwestmecklenburg.de

Energy Agency – permanent Info point / RES-ambassadors

PROJECT: RES-CHAINS

PROGRAM: SOUTH BALTIC PROGRAM

MADE BY: YVONNE ROWOLDT

LANDKREIS NORDWESTMECKLENBURG

FOR: SOUTH BALTIC PROGRAM USERS

DATE: OCTOBER 2013

Introduction or abstract

In CP5 should spread information and campaign actions. Due to project-application: “The motto is to provide information and education to convince. And finally the implementation of permanent Info points and RES-ambassadors/experts. The idea is to transfer the idea and concept of the Energy Agency for Southeast Sweden to other regions to inform and train political decision makers, civil servants and other actors about the possibilities and opportunities of RES, Info points will outlast the termination of the project and will continue at least until 2020.”, following paper using analysis about situations in Mecklenburg -Vorpommern, in detail on administrative district North West Mecklenburg and come up with structure and targets as an information point concept for administrative district North West Mecklenburg, including implementation and status.

BACKGROUND – current situation

Analysis (see appendix) of existing consultations points and planning about energy agencies in Mecklenburg-Vorpommern shows following results:

- A challenge for potential users of consultations is finding suitable contact!
- Demand of consultation for public sector confirmed!
- Connection of existing information points, planned agencies and displaying of it and its target groups as piloting between consultations needed!

As analysis described it is complicated of an administrative district to set up new aims and tasks, only compulsory tasks will be financed. RES isn't yet a compulsory task! So only coo-financing of RES-tasks are possible, while free budgets exist. Since reorganisation of administrative district in 2011 administrative district has not longer free budgets, RES-tasks continuance not secured now.

But another view is finance ability of region. RES as part of business development or as part of Services of General Interest (SGI) is a working field for administrative district. Regional added value, infrastructure, climate change are working fields for a district. How to integrate RES in it? How realise a continuance to RES partner and existing info points (EU, Germany, MV, regional, local)? How spread information about local RES (location, type and explanation, data, contact info)? How became administrative district North West Mecklenburg a durable Information Point?

Implementation – administrative district as information point for RES

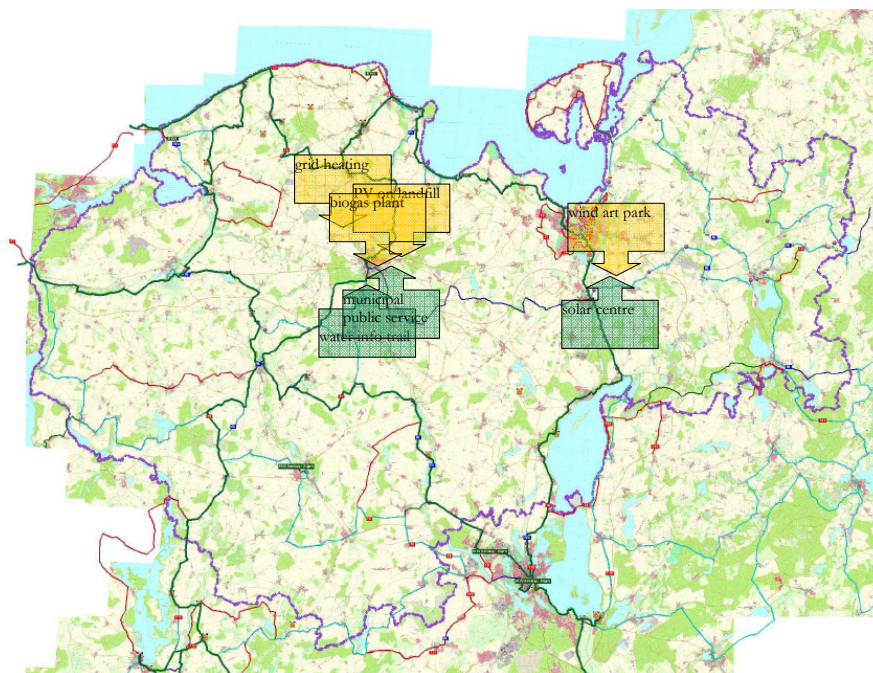
Conception for a Information Point – component long life information

For a target group public sector (municipalities, political decision makers, civil servants) an administrative district is elemental partner! So focusing all tasks on this target group.

Using administrative district website as Information Point (IP). Planning of district website as nod for existing RES-IP or energy agencies in Mecklenburg-Vorpommern, in region Westmecklenburg and in North West Mecklenburg. Main information about RES, like types, best praxis and opportunities for rural area will illustrated, contact info and main consultation field of other IPs as well. Besides project information about RES-Chains and other RES-projects of administrative district.

sub-component “info point tour” (education & tourism)

An example for a long-life information is connecting existing RES-IPs in North West Mecklenburg as a tour. This “RES-Tour”, connecting even tourism and education. **Here we bring information about different points together, like best-practice-site or site of consultation, or consultation for different RES-types or targets groups.** If there is a guided station tour possible, opening hours, prices or contact details should available (and refreshable on web). Target group should pointed out. Routes between points should described/displayed. Firstly in a flyer or on our website, but till project ends we want to have route info signs (with short description, QR-Code to website and EU/RES-Chains logo) on existing tourism bicycle routes along IP places. In future “RES-Tour” can expanded, new stations can included.



picture 1 map of North West Mecklenburg with potential sites for RES-Tour

“RES-Tour” connecting IPs via existing bicycle routes, like local routes or tourism route like “baltic coast”. Signs about IPs should places on junction of bicycle route. Here can a sign “catch” attention of tourist for a IP near by. It have to come up with general information about IP (technical data, opening hours) and a story, why should visit it. Next picture shows an example for a sign.

Standort der Energietour Nordwestmecklenburg

Kunst-Windpark Wietow

Jede Windkraftanlage hat einen weiblichen Namen, als Pate für vier verschiedene Generationen bekommen. Die Wind-Anlage „Save the Seas“ bekam den Namen Sophie (Sophie Schmidt), nach der damals 5 Jahre alten Enkelin von Dr. Brigitte Schmidt, Entwicklerin dieses Parks, als Repräsentantin der Generation, welche die Energiewende umsetzen wird.

„Mecklenburg Countryside“ bekam den Namen Lotte (Lotte Bösch), nach der ältesten Einwohnerin von Lübow, welche für der Einweihung ihre Tracht anzog und extra ein Gedicht geschrieben hatte. „The Creation“ bekam den Namen Heidrun (Heidrun Rudolph), einer Mitarbeiterin aus dem Wirtschaftsministerium, welche die Generation repräsentiert, die diese Anlagen mit aufzubauen half, und die finanzielle Unterstützung durch das Land ermöglichte.

Die Windkraftanlage mit dem Thema „The Tree of Life“ bekam den Namen Rosa (Rosa Fischer), der Großmutter von Rosemarie Rübnsamen, Mitentwicklerin diese Parks.

Art wind park Wietow

Each wind turbine was christened with a female name from four different generations. The wind turbine „Save the Seas“ got the name Sophie (Sophie Schmidt), a five year old granddaughter of Dr. Brigitte Schmidt, developer of this park, representing the generation which will implement the energy turnaround.

„Mecklenburg Countryside“ got the name Lotte (Lotte Bösch), the oldest citizen of Lübow, who brought a baking tray of cake every day to the building site during the construction phase. She was so fascinated by the new technology and the accomplishment of the constructors that she could not sleep in the night before the inauguration, so she got up, fetched her traditional costume from Mecklenburg, and wrote a poem.

„The Creation“ got the name Heidrun (Heidrun Rudolph), an employee of the Department of Trade and Industry of Mecklenburg-Vorpommern, representing the generation that constructed the wind farm. Under her guidance we received the last financial support for wind turbines in Mecklenburg-Vorpommern.

The wind turbine with the topic „The Tree of Life“ got the name Rosa (Rosa Fischer), the grandmother of Rosemarie Rübnsamen, co-developer of this park.

In Betrieb seit	1996	operating since
Hohe	64 m	hight
Hersteller	Energcon EN46	manufacturer
installierte Leistung	2 MW	installed power
jährlicher Ertrag	3200 MWh	yearly production
Durchschnitts-Windgeschwindigkeit auf Rotorhöhe	5,4 m/s	annual average wind speed at hub height

mehr Informationen

Entfernung 950 m in Wietow

in Solarzentrum Mecklenburg-Vorpommern

Öffnungszeiten ??

more informations

distance

in Solarzentrum Mecklenburg-Vorpommern

openig hours

Site of RES-Tour North West Mecklenburg

picture 2 example for a info sign

Promotion

Target group for districts information point are municipalities (political decision makers, civil servants). So well know cannels for this group, like district committees or public organisations will be used to promote, but even normal press information and off course connected information points and partner. For promotion the “RES-Tour”-Flyer, PowerPoint-presentations and website will be used.

- in North West Mecklenburg
 - regional press
 - website info and link on news-site
 - committee of business, if possible even other committees
- public organisations
 - Regionaler Planungsverband Westmeckleburg
 - Städte- und Gemeindetag MV
 - Landkreistag MV
- RES-partner
 - Netzwerk Regionale Energie MV
 - Akademie für Nachhaltige Entwicklung
 - (Bio)Energiedörfer MV eG
- Information Points
 - Solarzentrum MV
 - Stadtwerke Grevesmühlen
 - Stadt ohne Watt eV
 - HWS Holzwärme Stellshagen eG

Durability –RES information in administrative district

Consultation for energy efficiency and use of RES is not part of compulsory tasks of an administrative district in Mecklenburg-Vorpommern. But working in field of RES as part of planning or environment permits needs relevant data about it. In planning department since 2007 a person for RES-coordination is responsible. But this position is not able to finance by district so far, several subsidies are used. So different aims and targets were to fulfil by that situation. With that a continuance in reaching targets and working personnel are complicated. But these projects were used to build up a regional network and analyse district energy data.

An open consulting point for all target groups is not a district aim, because of primarily target group of district. Privates and companies can use own supplier or free consultants. Students get information in school (in cooperation with public/private associations) Only municipalities (administrative or political level) or its companies may need consultations by administrative district.

With long-life information on web and “RES-Tour” existing IP will be connected. As target groups and tasks will be displayed, a piloting between IPs and consultants is possible. So a benefit for all players will come up, specially for public sector, because administrative district is part of it.

In consideration of the fact of finance for district (mentioned before) other constructions for piloting could be feasible. May an alliance of stakeholders in region.

Component Alliance of RES in North West Mecklenburg

Conception for development of an Information Point to a Regional Energy Agency – component association of stakeholders

To bring durability in information point an idea of association of members of working group for RES in North West Mecklenburg should be set up. Administrative district can provide working place and administration of alliance, with an annual fee per stakeholder personnel (coordinator) and preparation of projects should be secured. Projects could be in charge of associated partner, but with coordination of alliance it's sure, that projects are more effective for region (and not losing money by double works). So tasks even from alliance working fields are part of these projects, like

- PR for RES,
- consultation mostly for municipalities, in privates and commercials (but always with advice for more detailed from experts of networks, like other energy agencies or info points)
- analysis of concepts of RES in region (coordination, what's known, what's requested by different stakeholders) like
 - eService (GIS service tools)
 - regional energy concept Westmecklenburg (potentials)
 - mapping (register of plants, best practice)

Implementation status

component long life information about RES on website

Done

- Bringing basic (long-life) information about RES on web page
- List and database to relevant projects in North West Mecklenburg on web page
- District staff unit listed in repowermap.org as RES-Information-Point

ToDo remaining time of RES-Chains

- Guide for suitable network partners on web page, mapping (e.g. repowermap.org)
- Connecting information from different networks (like environmental, business development, planning), e.g. as key word “energy” on web page

sub-component « RES-Tour »

Done

- finding possible existing points in NWM to connect
 - technical RES-types sites, best praxis
 - heating grid of bioenergy village Stellshagen
 - PV on landfill site Degtow
 - biogas plant Grevesmühlen
 - energy surplus sewage plant Grevesmühlen
 - art wind park Wietow
 - educational points
 - Solarzentrum Wietow
 - municipal public service Grevesmühlen
 - water information trail Wotenitz

ToDo remaining time of RES-Chains

In current month, content will filled together with IP-partner. Meanwhile inside administration all facts around signs (costs, right place on site, set up etcetera) will collected. In November last step, tender to set up, is planned. So with end of project not only website/flyer should be available, but also signs should be exist.

- creation of website/flyer etcetera, mapping
- content & costs of signs on route
 - Name

- Which RES
- Collecting Data -> Costs? Start? Works? Why?
- choice of signs -> standing or additional to route-signs, costs, time to make & set up
- information to IP, how to come or renew data in web: information to stuff unit business and regional development

component alliance of RES

Done

- developing of idea
- first contacts and meetings about it with possible partners with positive feedback

ToDo

Because of construction of this task, meaning coordination and cooperation with a lot of players, it will not established in project time, but it is created in RES-Chains and next steps starting during project time of RES-Chains.

- construction and statutes of alliance
- get partner from working group
- description of aims, operational fields (according this paper)

Appendix – Analysis current situation in Mecklenburg-Vorpommern and future plannings

existing consultation points for RES in Mecklenburg-Vorpommern

A lot of players are working in field of energy consultation and information. Today mostly organised private or in association. With a increase demand for consultation for municipal stakeholders, due to energy aims in local development, starting public organisations.

All players have different key topics or target groups. So in following tables are shown main topics and target groups for these info points in MV.

matrix main topics

Institutions	electricity	heat	wind	solar	biomass	RES	Sustainable development
Verbraucherzentralen	xx	x		x	x		
Städte- & Gemeindetag	x		xx	x	x	xx	xx
private energy consultants							
M-Vena GmbH	x	x				x	
Energieberatung MV	x	x				x	
Energy consultants of energy supplier							
Bsp: mea GmbH	x	x	xx			x	
Public trusts and associations (energy technology, regional development & politics)							
eamv	xx	xx		x		x	
REMV	x	x	x		x	xx	xx
ANE	x	xx	x	x	x	xx	xxx
Grünes Forum Selbstverwaltung	x	x	x	x	x	xx	xx
Stadt ohne Watt e.V.	x	x	xx	xx	xx	xxx	x
Subsides funded institutions:							
Solarzentrum Wietow	xx	xx	x	xxx	x	xxx	xxx
LEEA Neustrelitz	xx	xx	xx	xx	xx	xx	xx

matrix target groups

Institutions	Private	Commercial	Public (municipality)	To Invest in building/plant	Students
Verbraucherzentralen	xx	x	x	x	x
Städte- & Gemeindetag MV			x	x	
private energy consultants					
M-Vena GmbH		x	x	xx	
Energieberatung MV		x		xx	
Energy consultants of energy supplier					
Bsp: mea GmbH		x	x	x	
Public trusts and associations (energy technology, regional development & politics)					
eamv		x		xx	
REMV	x	x	x		
ANE			xx		
Grünes Forum Selbstverwaltung			xx		
Stadt ohne Watt e.V.	x	x	x	xx	x
Subsides funded institutions:					
Solarzentrum Wietow	x	x	x	x	xx
LEEA Neustrelitz	x	xx	x	x	xx

RESULT:A challenge for potential users of consultations is finding suitable contact!

future developments in federal state and planning region

Analysing field of energy shows divergence of responsible players for targets and implementation of RES. Political targets setting up by European Union, German Government should be reached by realisation of energy efficiency project and/or new RES-projects by private, commercial or public. Despite small public sector, influences as model for RES-projects are high. So it is elementary, to enable public sector to implement such projects as part of Services of General Interest (SGI). Today municipalities starts with analysis and project ideas, but how to close gap between idea and realised project is in every project different and needs consultation in technical, finance and local constitutional law aspects. With a new consultation offer from Städte- and Gemeindetag MV (public organisation of municipalities in Mecklenburg-Vorpommern) a first step comes in action for an energy agency on federal level as complement energy ministry to bring projects (and maybe problems) closer to targets setter. Next step are developing conception of agency by Städte- und Gemeindetag MV or Academy for sustainable development MV. This is planned to start at 1st of January 2014, as far as finance plan of federal parliament comes in action and should finished until 2016. After that, consultation of municipalities, information about RES on federal level (energy web portal) and working on federal targets in RES are combined in one-stop agency.

As a region Westmecklenburg analysed energy system (production, demand, potentials for RES) last year. One of recommendations is a regional energy agency, possible as part of existing organisation of partial planning. Targets are more in collection and presentation of regional data for municipalities. But even technical tasks, like connecting RES-production, grid and consumption

(like a virtual power plant) are discussed here. This is an ambitious task! But a agency with planning tasks, may governmental-funded by BMU-Klimaschutz-Initiative seems to be realistic in next time.

RESULT: Demand of consultation for public sector confirmed!

Current situation in administrative district North West Mecklenburg

According to a regional situation with existing consultation points and planned energy agencies another type of agency or information point as nod to pilot in network of consultants in RES on district level may be good for regional municipalities. So a lack of **management (coaching) between information** about this topic (big nationwide information without practical information for each municipality and its specific problems), **analysis & conception phase** (interval starts with different phases (amount of subsidies) complicated to be part of it) and **implementation & monitoring** (often run out of money, not enough time in subsidies period, because of late start, late information in local level) could close by this nod. But in order to finance a real agency by these municipalities, due to finance planning situation from district and municipalities, it is not very realistic in next time.

RESULT: Connection of existing information points, planned agencies and displaying of it and its target groups as piloting between consultations needed!